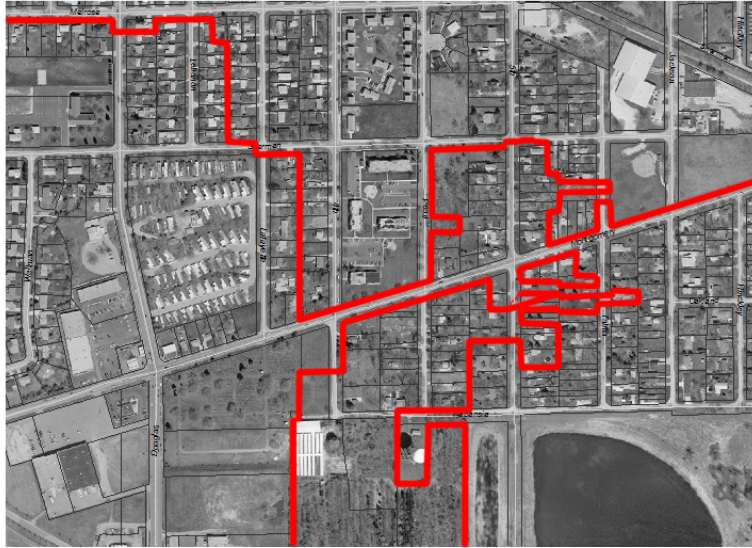




## GIS and Mapping

GIS Basemap  
Montgomery, Illinois



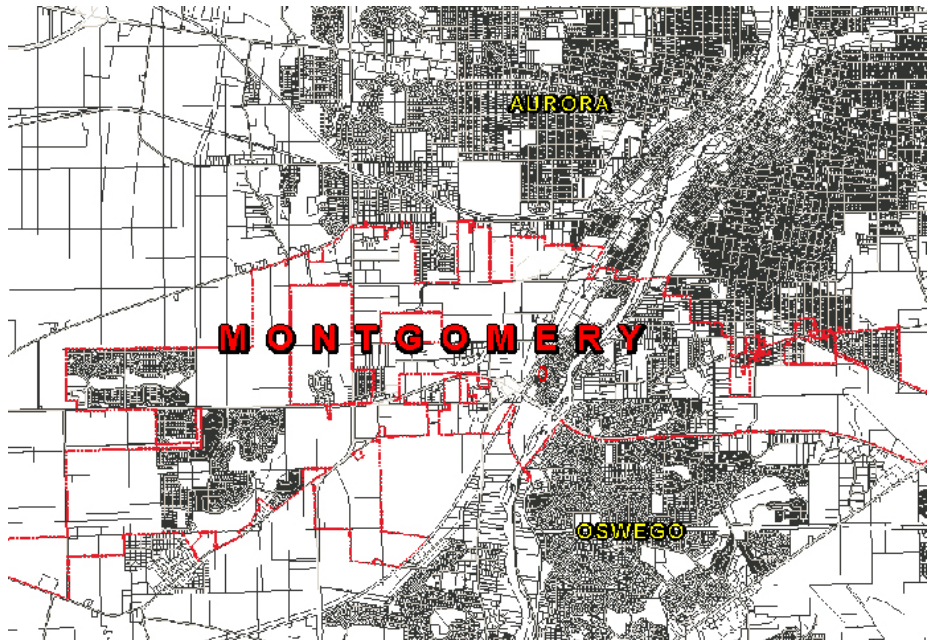
East Montgomery tapering into Aurora

### Project Features:

- Coordination of basemaps from Kendall and Kane Counties
- Utilization of data from MicroStation, AutoCAD & ESRI formats
- Provision of standard basemap usable by Village Hall, Public Works and Police Department

Because the Village of Montgomery has experienced rapid development in the last several years, the management of infrastructure and protection of natural areas as well as the best use of manpower have become high priorities. Therefore, Village officials contracted EEI to produce a GIS Basemap that could be shared by Village Hall, Public Works and Police Department staff members.

The basemap was constructed using ESRI Shapefile and MicroStation .dgn format and digital data from several different sources. It also included the use of high quality aerial photography, satellite imagery and AutoCAD information delineating proposed subdivision improvements.



The basemap reveals Montgomery's extension to North Aurora, Sugar Grove and Boulder Hill and the servicing of four fire protection districts