



## GIS and Mapping

Public Works GIS Basemap  
Yorkville, Illinois

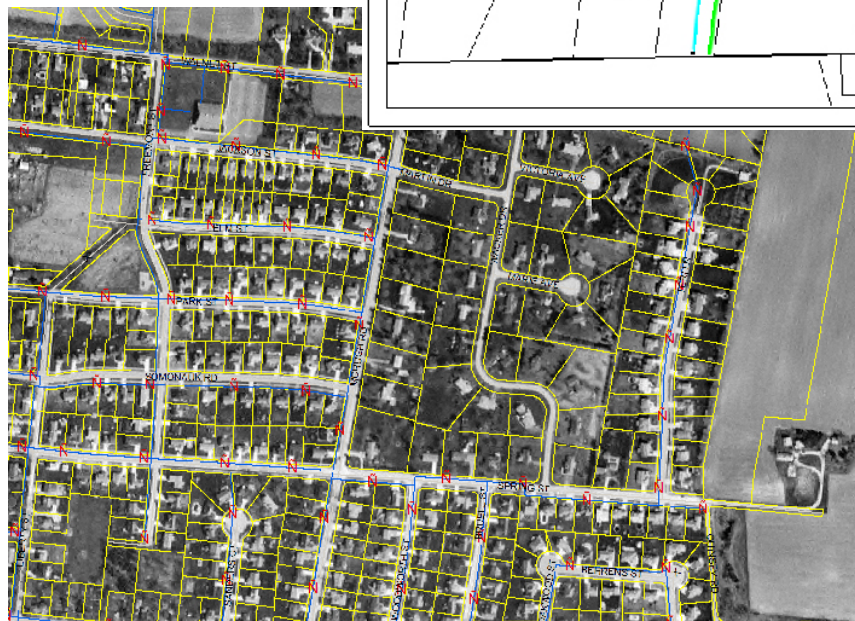
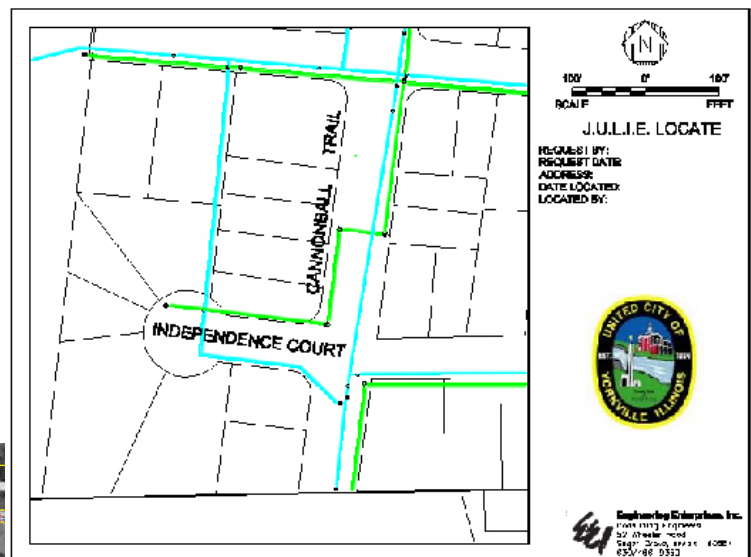
EEI was charged with the task of converting pertinent information from United City of Yorkville hard copy files of subdivision and public improvement plans to digital format.

Having over 1,000 flat file sheets scanned and transferred to CD, EEI aligned the ensuing TIF images with a photographic base and digitized them using AutoCAD to State Plan Coordinate System.

The resultant AutoCAD drawings were later converted to ESRI (Environmental Research Institute) Shapefile format to include various attributes as specified by the City Engineer.

### Project Features:

- Conversion of paper plans to digital format
- Realization of GASB 34 compliance
- Creation of a base system for tracking future developments



Water main network in downtown Yorkville

Location of water and sanitary sewer