



# Site Development

Thompson Junior High School  
Oswego, Illinois

### Construction Cost:

- \$9,500,000

### Sitework Cost:

- \$650,000

### Project Features:

- Building Addition
- New 344 Square Yard Fire Lane with Bus Parking
- New 855 Linear Feet of Water Main Loop
- Resurfacing and Restriping of the 7,813 Square Yard Existing Parking Lot
- 940 Linear Feet of Sanitary Sewer Relocation
- 750 Linear Feet of Storm Sewer/Infiltration Trench



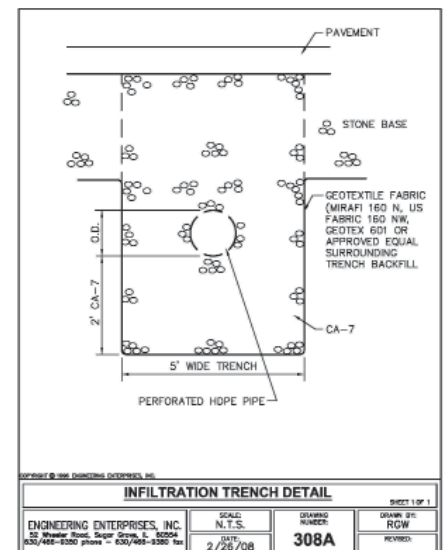
Entrance of Thompson Junior High School



Building Addition and Fire Lane

Engineering Enterprises, Inc. provided the site design, and construction services for the five acre Thompson Junior High School site on Boulder Hill Pass Road in Oswego, Illinois

An infiltration system was designed to off-set the increased impervious area, eliminating the need to provide stormwater detention. The infiltration system consisted of perforated storm sewer with a clean crushed stone bed, 2 feet deep and 5 feet wide. Run-off from the fire lane and roof will enter the storm sewer system through surface grates similar to standard storm sewers. But instead of conveying this run-off down stream to an outlet, the perforated pipe allows water to flow out of the pipes and into the bedding where it can slowly infiltrate into the ground. Once the system has reached capacity, it will operate as a normal storm sewer. This system can store a 1-inch rain falling on the new improvements without any run-off.



Infiltration Trench Detail