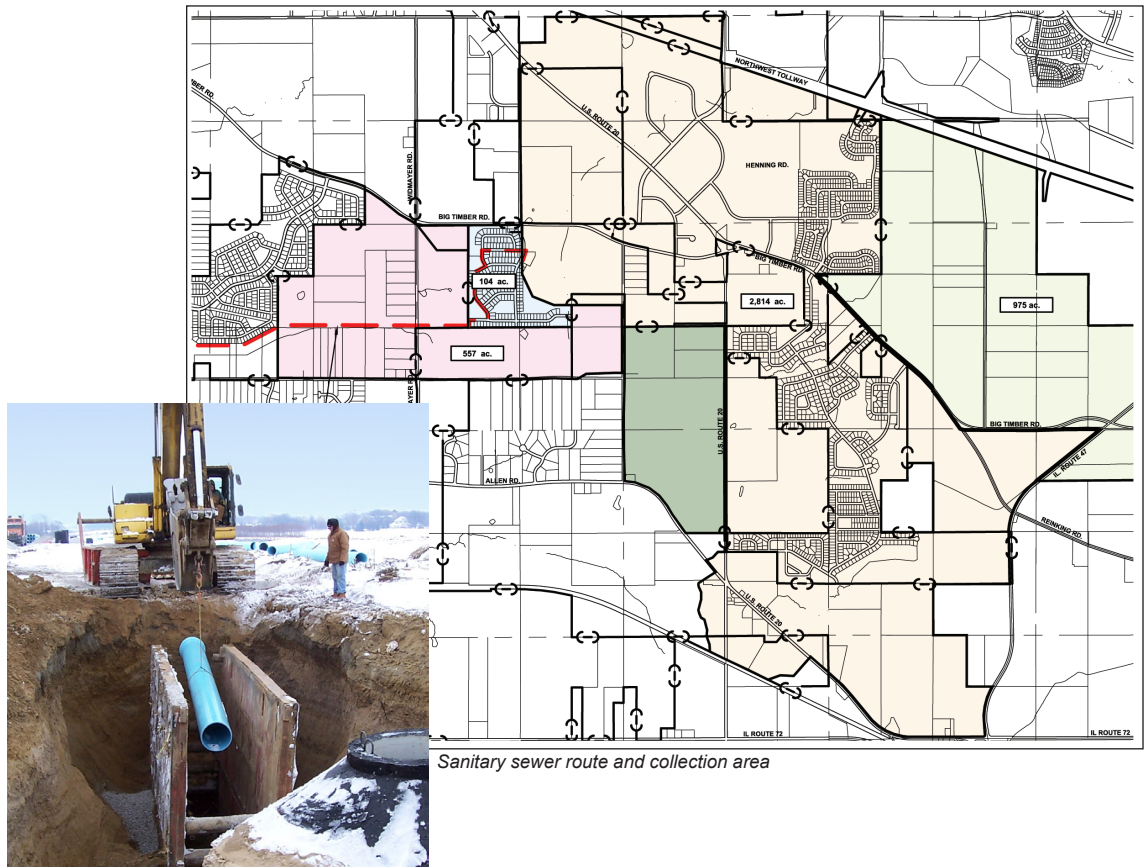




## Wastewater Systems

Widmayer Interceptor Sewer  
Hampshire, Illinois



Sanitary sewer route and collection area

Sanitary sewer installation

The Widmayer interceptor project consists of approximately 11,000 lineal feet of 18 inch diameter interceptor sewer and will collect for an area of approximately 4,500 acres. The interceptor sewer has been designed for 22,800 population equivalents. This project, which is part of a larger \$7.0 million wastewater collection improvement project, has just recently begun construction and is scheduled to be complete in July 2006.

As part of this project, approximately 130 feet of set in place 24 inch and 36 inch diameter steel casing pipe is being utilized, a lift station will be demolished, a crossing of a Nicor gas main will be coordinated, and required leakage testing via air pressure tests, deflection testing,

and vacuum testing will be conducted. Televising of the entire sewer will be performed for quality assurance and record information.

Additionally, tree removal, wetland restoration, traffic control, and restoration of pavement and landscaping is also being performed.

#### Construction Cost:

\$1,189,000 Est.

#### Project Features:

- 11,000 lineal feet of trunk sewer
- 24" & 36" diameter steel casing pipe
- Lift station demolition
- Easement acquisition